

Appendix E – Existing Roadway Plans

COMMONWEALTH OF KENTUCKY
DEPARTMENT OF HIGHWAYS

PLAN AND PROFILE OF PROPOSED
STATE HIGHWAY

NELSON - WASHINGTON COUNTIES
F 222 (5)

NELSON - WASHINGTON CO. F 222 (5)
BARDSTOWN - SPRINGFIELD

APP. ASST. DIST. NO.	STATE	FISCAL YEAR	SHEET NO.	TOTAL SHEETS
7	KY.	1955	1	69

SUBSECTIONS OF CONTRACT FOR

NELSON COUNTY
F 222 (5) SP 90-125-3

90-125-3CA Grade, Drain, and Surface from Sta. 365+50.0 to Sta. 416+56.17
90-125-3B1 Bridge (Triple 14'x11'x43' RC. Culvert - 0° skew) at Sta. 406+00
90-125-3B2 Bridge (65'-90'-90'-90'-65' Cont. R.C.D.G. Spans - 15° skew) at Sta. 414+54

WASHINGTON COUNTY
F 222 (5) SP 115-129-6

115-129-6CA Grade, Drain and Surface from Sta. 416+56.17 to Sta. 445+90.0
115-129-6B1 Bridge (65'-90'-65' Cont. R.C.D.G. Spans - 0° skew) at Sta. 419+33

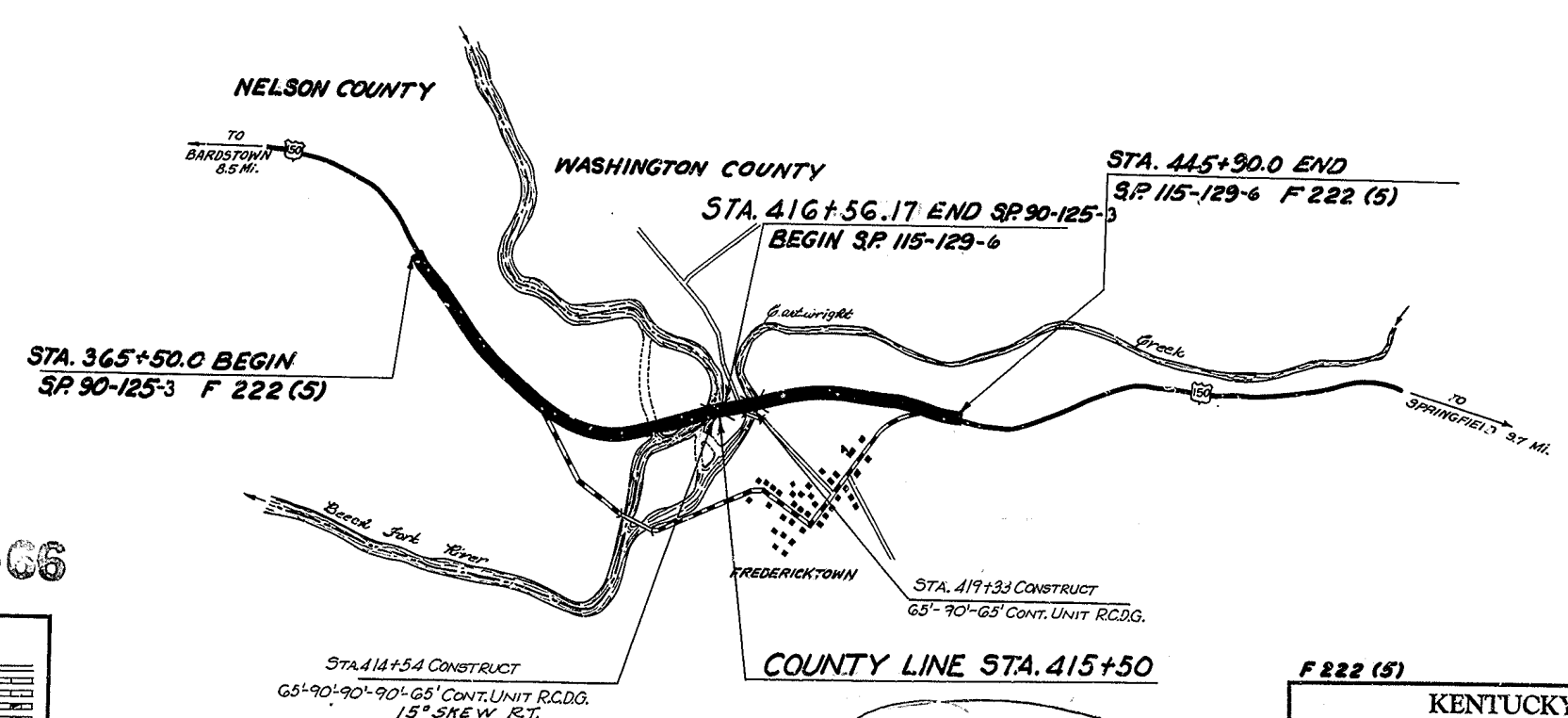
INDEX OF SHEETS

SHEET NO.	DESCRIPTION
1	LAYOUT SHEET
2 - 2A	TYPICAL SECTIONS—SUMMARY OF QUANTITIES LIST
3.11	STANDARD DRAWINGS
3.12	CURVE WIDENING, SUPER ELEVATION, ROCK SECTIONS
3.13	STANDARD STRUCTURES
3.14	MISCELLANEOUS STANDARDS
3.15	PRIVATE ENTRANCES & ROAD INTERSECTIONS
3.16	CEMENT CONCRETE PAVEMENT
3.17	GUARD RAIL
10-12	PLAN AND PROFILE SHEETS
13-14	DETAIL SHEETS
15	REFERENCE SHEETS
16-17	DRAINAGE SHEETS
18-69	CROSS SECTION SHEETS
41	BRIDGE SHEETS

DATE	
REVIEWED BY	
RECORD PLANS	
CONSTRUCTION PLANS	

REVIEWED BY
DIVISION OF CONSTRUCTION

PLANS CHECKED BY
CHIEF ENGINEER



MICROFILMED - 66

CONVENTIONAL SIGNS

UNIMPROVED ROAD	[Symbol]
GRADE AND DRAINED ROAD	[Symbol]
SOIL SURFACE ROAD	[Symbol]
METAL SURFACE ROAD	[Symbol]
LOW TYPE BITUMINOUS ROAD	[Symbol]
PAVED ROAD	[Symbol]
COUNTY LINE	[Symbol]
CORPORATE LIMITS	[Symbol]
SURVEY LINE	[Symbol]
PROPOSED RIGHT OF WAY	[Symbol]
GRADE LINE	[Symbol]
GROUND LINE	[Symbol]
TRAVELED WAY	[Symbol]
RAILROAD	[Symbol]
FENCES (EXCEPT STONE & HEDGE)	[Symbol]
STONE FENCE	[Symbol]
HEDGE FENCE	[Symbol]
TREES & STUMPS	[Symbol]
PIPE LINE	[Symbol]
TELEPHONE POLES	[Symbol]
PIPE CULVERT	[Symbol]
CONCRETE CULVERT & BRIDGE	[Symbol]
LARGE STREAM	[Symbol]
SMALL STREAM	[Symbol]
BENCH MARKS	[Symbol]
ROAD INTERSECTIONS	[Symbol]
MARSH	[Symbol]
BUILDINGS	[Symbol]

GRAPHIC SCALE in feet

LAYOUT MAP

S.P. 90-125-3		S.P. 115-129-6		TOTAL F 222 (5)	
GROSS LENGTH	5106.2' LIN. FT.	GROSS LENGTH	2233.8' LIN. FT.	GROSS LENGTH	8040.0' LIN. FT.
DEDUCTED FOR EQUALITIES	0' LIN. FT.	DEDUCTED FOR EQUALITIES	0' LIN. FT.	DEDUCTED FOR EQUALITIES	0' LIN. FT.
NET LENGTH	5106.2' LIN. FT.	NET LENGTH	2233.8' LIN. FT.	NET LENGTH	8040.0' LIN. FT.
RAILROAD CROSSINGS	NOT INCLUDED	RAILROAD CROSSINGS	NOT INCLUDED	RAILROAD CROSSINGS	NOT INCLUDED
BRIDGES	1 LIN. FT.	BRIDGES	1 LIN. FT.	BRIDGES	2 LIN. FT.

X-Sections sent to Dist. office
7-9-56 D.H.

F 222 (5)

KENTUCKY DEPARTMENT OF HIGHWAYS
COUNTY OF NELSON - WASHINGTON
BARDSTOWN - SPRINGFIELD

ROAD No. 90-125-3, 115-129-6 DATE 1955

APPROVED: [Signature] 1955
BY: [Signature] COMMISSIONER OF HIGHWAYS

DEPARTMENT OF COMMERCE BUREAU OF PUBLIC ROADS
RECOMMENDED FOR APPROVAL:
DISTRICT ENGINEER DATE
APPROVED: [Signature] DIVISION ENGINEER DATE

SURVEYED 11-54 BY G. J. Fuller
SURVEY APPROVED 11-7 1955 BY J. J. [Signature] CHIEF COUNTY ENGINEER
PLAN CHECKED 10-20 1955 BY S. E. [Signature] CHIEF DRAFTSMAN
SURVEY AND PLAN APPROVED 11-7 1955 BY M. A. [Signature] DIRECTOR OF DESIGN
SURVEY AND PLAN APPROVED 11-7 1955 BY D. H. [Signature] STATE HIGHWAY ENGINEER

LETTING DATE 11-30-55 COPY 7-9-56

SP 90-125-3

CULVERT PIPE SUMMARY

SHEET NO.	STATION	SKEW	CULVERT PIPE		CLASS 'A'	EXCAVATION		REMARKS
			18"	24"		STRUCTURE ROADWAY UNCLASSIFIED.	(DITCH)	
UNIT TO BID ON								
LIN. FT.			CU. YD.		CU. YD.			
S.P. 90-125								
	366+00	30°	64		3.17	46	10	1-STD, 1-ELL.
	370+22	30°	64		3.17	30	8	1-STD, 1-ELL.
	375+35	30°		68	4.23	45	18	1-STD, 1-ELL.
	379+50	30°	64		3.17	32	18	1-STD, 1-ELL.
	383+50	30°	28		3.17	32	16	1-STD, 1-ELL.
	387+00	30°	68		3.17	30	16	1-STD, 1-ELL.
	390+75	30°	112		3.17	70	5	1-STD, 1-ELL.
	394+00	30°	140		2.98	20	10	2-STD.
TOTAL NELSON Co.			580	68	26.23	305	101	
S.P. 115-129								
	443+00		48		2.98	3	1	2-STD.
	446+66		8		2.00	2	-	1-STD.
TOTAL WASHINGTON Co.			48	8	4.98	5	1	
TOTAL F 222(5)			628	76	31.21	310	102	

Ⓢ Included in general summary.

Ⓢ Alternate types of Culvert Pipe, Reinforced Concrete, Standard Strength, Triple Strength Vitriol Clay, Cast Iron.

GENERAL NOTES

- All curves to be banked and widened according to Standards or as directed. Superelevation for special cases to be authorized by the District Engineer.
 - The Contractor is not to order material for drainage structures until the quantities have been checked by the Engineer.
 - For typical sections in solid rock cuts, see Standard Drawings on Sheet No. 3.11 of these plans.
 - Drawings for standard warning signs for the protection of traffic will be furnished by the District Engineer.
 - Extra compaction in conformity with Art. 2.5.0 of the Department's 1945 Standard Specifications will be required throughout the project.
 - Guard Rail Posts and Cable to be removed and stored on right-of-way as directed by the Engineer.
 - Low-bearing soils, identified herein as Soils No. 1, 2, and 3, shall not be used in the top 12" of subgrade in fill sections, and when encountered within the top 12" of subgrade in cut sections shall be removed and replaced with Selected Soils having a C.B.R. value of 8.2 or greater, identified herein as Soils No. 4, 5, 6, and 7.
 - The Standard Specifications for State and Federal Road and Bridge Construction, edition of 1945, as amended by the amendments published in Pamphlet No. 3 of Approved Provisions, Specifications, and Amendments, with the following Provisions, Special Specifications and Amendments, will apply on this project.
 - Amendment No. 34-R Bituminous Fiber or Bituminous Cork Expansion Joint Filler.
 - Amendment No. 36 Asphalt Cement.
 - Amendment No. 39-R Measurement of Bituminous Materials.
 - Amendment No. 41 Composition of Mixtures (Bituminous).
 - Amendment No. 42-R Grading Requirements for Aggregates.
 - Emergency Provision No. 13 Deferment or Cancellation.
 - Special Specification No. 36-R-2 Membrane Curing. (May be used on Cement Concrete Pavement Only)
 - Special Specification No. 43-R-1 Hot-Poured Rubber-Type Crack and Joint Filler Compound.
 - Special Specification No. 46-R-1 Cold-Applied Mastic-Type Crack and Joint Sealer Compound.
 - Special Specification No. 49-R Grass and Agricultural Seed for Seeding.
 - Special Specification No. 52 Roadside Improvement.
 - Special Specification No. 45-R Surface Finish Exposed Concrete.
- EROSION CONTROL NOTES.**
- Required Contract Provisions for Federal Aid Primary, Urban, and Interstate Projects.
 - The road may be closed to through traffic.

NELSON Co. & WASHINGTON Co., F 222(5)
BARDSTOWN-SPRINGFIELD RD.

FED. ROAD DIST. NO.	STATE	FISCAL YEAR	SHEET NO.	TOTAL SHEETS
7	KY	1965	2A	69

FOR SURFACING

	LIN. FT.	Sq. Yds.	MILES
S.P. 90-125			
GROSS LENGTH	5106.2		0.967
NET LENGTH 404.3' DEDUCTED FOR BRIDGE	4701.9		0.890
ADDED FOR CURVE WIDENING AND APPROACHES		834 @ 22' 849 @ 22.5' 864 @ 23' 874 @ 24'	
TOTAL AREA NELSON COUNTY		12327 @ 22' 12604 @ 22.5' 12880 @ 23' 13432 @ 24'	
S.P. 115-129			
GROSS LENGTH	2933.8		0.555
NET LENGTH 224.0' DEDUCTED FOR BRIDGE	2709.8		0.513
ADDED FOR APPROACHES		2685 @ 22' 2752 @ 22.5' 2820 @ 23' 2954 @ 24'	
TOTAL AREA WASHINGTON COUNTY		9310 @ 22' 9326 @ 22.5' 9744 @ 23' 10180 @ 24'	
TOTAL PROJECT F 222(5)			
GROSS LENGTH	8040.0		1.522
NET LENGTH 628.3' DEDUCTED FOR BRIDGES	7411.7		1.403
ADDED FOR CURVE WIDENING AND APPROACHES		3519 @ 22' 3601 @ 22.5' 3684 @ 23' 3848 @ 24'	
TOTAL AREA F 222(5)		21637 @ 22' 22130 @ 22.5' 22624 @ 23' 23612 @ 24'	

SURFACING QUANTITIES

ITEM	UNIT	S.P. 90-125	S.P. 115-129	TOTAL F 222(5)
CEMENT CONCRETE PAVEMENT				
Crushed Limestone Size No. 6 for Insulation.	Ton	960	730	1690
Crushed Limestone Size No. 10 for Insulation.	Ton	960	730	1690
8" Uniform Cement Concrete Pavement.	Sq. Yd.	12327	9310	21637
Crushed Limestone Size No. 610 for Entrances & Mill Turnouts.	Ton	325	100	485
Roadway Excavation	Cu. Yd.	99055	20794	119849
BITUMINOUS CONCRETE SURFACE CLASS I				
Crushed Limestone No. 2	Ton	42951	3243	7540
Crushed Limestone No. 6	Ton	6151	465	1080
Crushed Limestone No. 10	Ton	19031	1435	3340
Bituminous Concrete Base	Ton	19501	1480	3430
Bituminous Concrete Binder, Type B	Ton	9501	720	1670
Bituminous Concrete Surface, Type B	Ton	7751	590	1365
Asphalt Cement, P.A.C.-5	Gal.	2550	1930	4480
Crushed Limestone Size No. 610 for Entrance & Mill Turnouts.	Ton	325	100	485
Roadway Excavation	Cu. Yd.	99009	20894	120694
Bituminous Conc. Binder Type B and/or Surt. Type B (for leveling)	Ton	160	130	280

Ⓢ Includes 140 tons for maintenance of local traffic.

BRIDGE AND CULVERT SUMMARY

SHEET NO.	STATION	SIZE	SKEW	INLET		OUTLET		GRADE	DRAWING NUMBER	STANDARD OR SPECIAL FILL ON CULVERT	CONCRETE		STEEL REINFORCEMENT	STRUCTURE EXCAVATION		STRUCTURAL STEEL	REMOVE EXISTING STRUCTURE	EXISTING STRUCTURE	CHANNEL CHANGE	
				ELEVATION	LENGTH	ELEVATION	LENGTH				CLASS 'A'	CLASS 'D'		COMMON	SOLID ROCK					CU. YD.
UNIT TO BID ON																				
S.P. 90-125																				
11	406+00	Triple 14" x 14" RC Culvert.		372.5	21'-6"	372.2	21'-6"	387.65	12240	Spcl.	3.4'	335.4	47088	125						
11	414+54	65'-90'-90'-65' Cont. Unit R.C.D.G. Bridge	15°						12238	Spcl.		1233.6	37.7	255363	775	130	21755			See Road Plans
TOTAL NELSON Co.											Ⓢ 15690	Ⓢ 377	Ⓢ 302451	Ⓢ 900	Ⓢ 130	21755				
S.P. 115-129																				
11	419+33	65'-90'-65' Cont. Unit R.C.D.G. Bridge							12239	Spcl.		712.9	22.4	135478	500	150	11743			See Road Plans
TOTAL WASHINGTON											Ⓢ 712.9	Ⓢ 22.4	Ⓢ 135478	Ⓢ 500	Ⓢ 150	11743				
TOTAL F 222(5)											Ⓢ 2281.9	Ⓢ 60.1	Ⓢ 437929	Ⓢ 1400	Ⓢ 280	Ⓢ 33498				

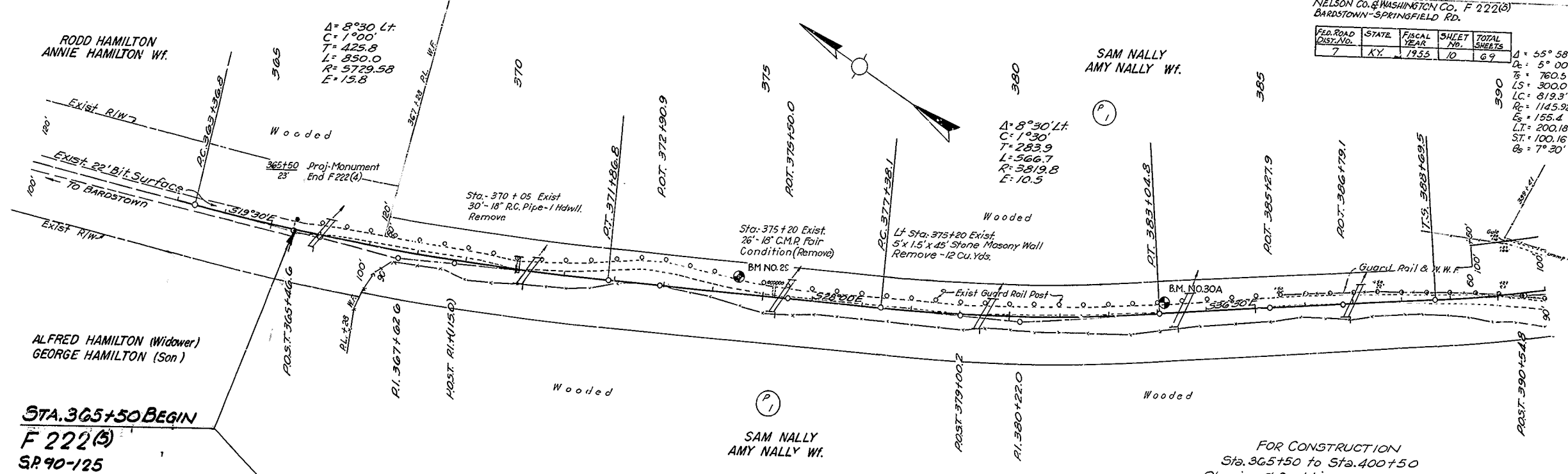
Ⓢ Included in general summary.

Ⓢ Rock fills to be made around abutments, as shown on bridge plans and indicated in distribution on plan sheets No. 11 and No. 12.

NELSON CO. & WASHINGTON CO. F 222(3)
BARDSTOWN-SPRINGFIELD RD.

FED. ROAD DIST. NO.	STATE	FISCAL YEAR	SHEET NO.	TOTAL SHEETS
7	KY.	1955	10	69

$\Delta = 55^\circ 58' Lt$
 $D_c = 5^\circ 00'$
 $T_s = 760.5'$
 $LS = 300.0'$
 $LC = 819.3'$
 $RC = 1145.92'$
 $E_s = 155.4$
 $LT = 200.18'$
 $ST = 100.16'$
 $E_t = 7^\circ 30'$

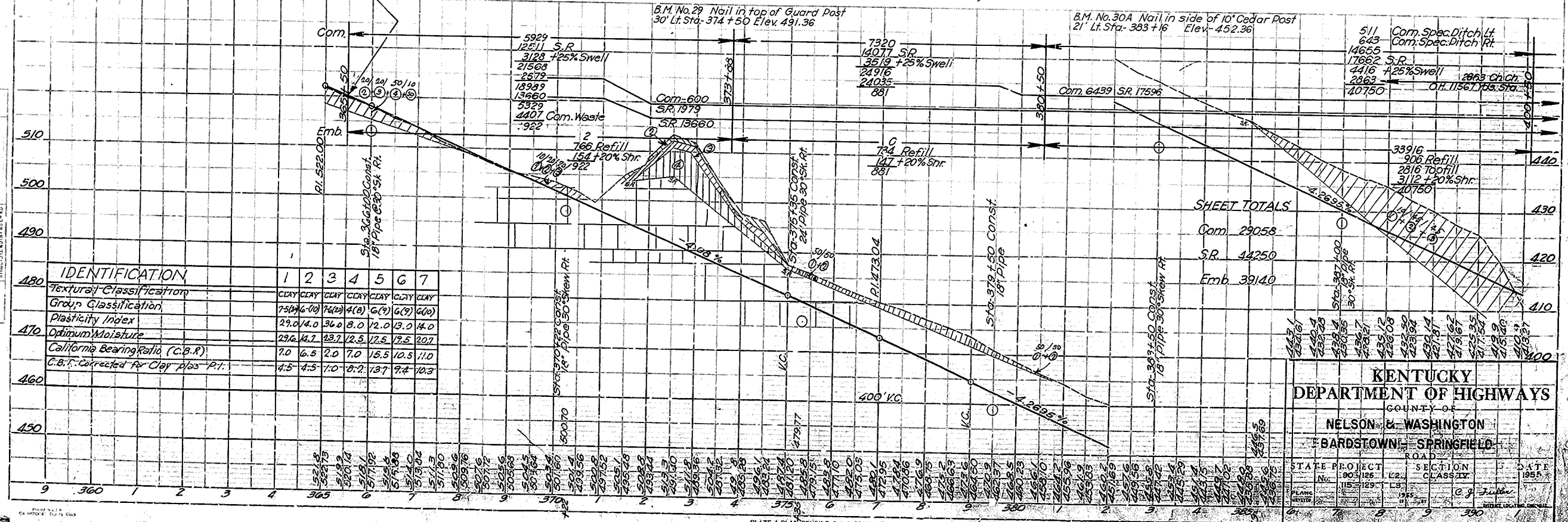


STA. 365+50 BEGIN
F 222(3)
SR 90-125

FOR CONSTRUCTION
Sta. 365+50 to Sta. 400+50
Clearing & Grubbing 13.51 Acre
Roadway Excavation 13308 Cu. Yd.
Overhaul 11567 Yd. Sta.

NOTE:
Power Poles are the property of
Kentucky Utilities Company Inc.,
J.W. Newby, Local Manager, Springfield, Ky.

NOTE:
Telephone Poles are the property of
Southern Bell Telephone & Telegraph Co. Inc.,
J.J. Isaacs, Group Manager, Danville, Ky.



IDENTIFICATION	1	2	3	4	5	6	7
Textural Classification	CLAY	CLAY	CLAY	CLAY	CLAY	CLAY	CLAY
Group Classification	7.5(4)6(10)	7.4(2)	4(0)	6(9)	6(9)	6(10)	
Plasticity Index	29.0/4.0	36.0	8.0	12.0	13.0	14.0	
Optimum Moisture	29.6	14.7	23.7	12.5	12.5	12.5	20.7
California Bearing Ratio (C.B.R.)	7.0	6.5	2.0	7.0	18.5	10.5	11.0
C.B.R. Corrected for Clay plus R.I.	4.5	4.5	1.0	8.2	13.7	9.4	10.3

KENTUCKY
DEPARTMENT OF HIGHWAYS

COUNTY OF
NELSON & WASHINGTON

BARDSTOWN - SPRINGFIELD

STATE PROJECT No. 90-125	SECTION CLASSIFY U2	DATE 1955
PLANS 115-129	DATE 1955	

FED. ROAD DIST. NO.	STATE	FISCAL YEAR	SHEET NO.	TOTAL SHEETS
7	KY.	1935	11	69

LUCY REYNOLDS
(Widow)
Rt. & Lt. Sta. 413+70 to 415+00
Const. Channel Change.

SAM NALLY AMY NALLY Wf.
 $\Delta = 55^\circ 58' Lt.$
 $\Delta = 5^\circ 00'$
 $T = 760.5$
 $LS = 300.0'$
 $LC = 819.3$
 $RC = 1145.92$
 $ES = 155.4$
 $LT = 200.18$
 $ST = 100.16$
 $OS = 7^\circ 30'$

$\Delta = 87^\circ 00' Lt.$
 $C = 95^\circ 30'$
 $T = 56.94'$
 $L = 91.10'$
 $R = 60.0'$
 $E = 227+00.0$

$\Delta = 27^\circ 30' Lt.$
 $C = 23^\circ 00'$
 $T = 60.96'$
 $L = 119.57'$
 $R = 249.11'$
 $E = 7.34'$

Sta. 394+50 to Sta. 406+00 Const
Special Ditch Rt. & Lt. of E.

Rt. Sta. 404+50 Const.
Ent. & 24"-24" Pipe.

STA. 416+56.17 END S.R. 90-125
BEGIN S.R. 115-129
Exist. Road 2-160' Steel Truss Spans

Proposed Limits of Channel Change
C.L. MUDD
MYRTLE MUDD Wf.
End of Dike

SAM NALLY AMY NALLY Wf.
Rt. Sta. 417+50 Const.
Field Ent.

Lt. Sta. 417+50 Const.
COUNTY ROAD APPROACH
See Special Approach Sheet.

Remove existing bridge after new bridge is opened to traffic. See special note on Sheet No. 2 of the Bridge Plans.
Remove Pier and West Abut. (Stone Mas.) to Channel Bed Elev. Use Masonry for Constructing Spur Dike of Base of Fill Slope on Lt. from Sta. 420+50 to Sta. 422+00
Rt. & Lt. Sta. 418+40 to Sta. 420+00
Construct Channel Change as shown.

NELSON COUNTY
FOR CONSTRUCTION
Sta. 400+50 to Sta. 415+56.17
Clearing & Grubbing 7.04 Acre
Roadway Excavation 18460 Cu. Yd.
Overhaul 42400 Gd. Sta.

WASHINGTON COUNTY
FOR CONSTRUCTION
Sta. 415+56.17 to Sta. 420+44.5
Clearing & Grubbing 4.02 Acre
Roadway Excavation 15204 Cu. Yd.
Overhaul 59833 Yd. Sta.

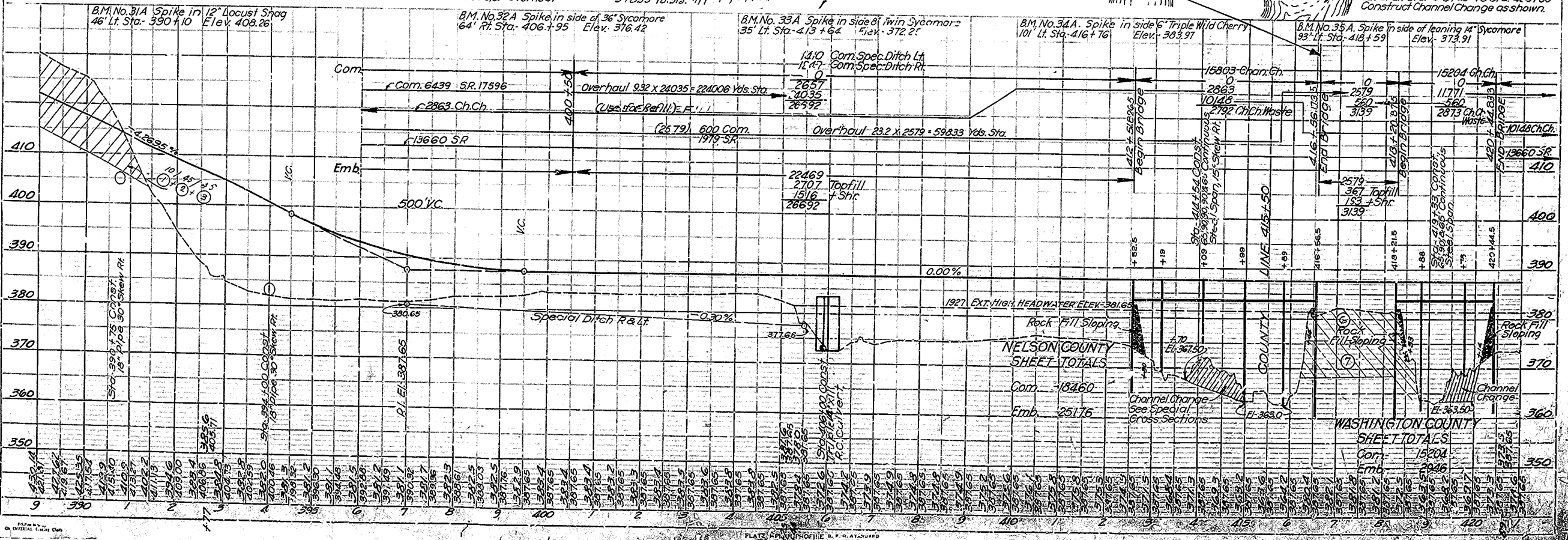
B.M. No. 31A Spike in 12" Locust Shag
46' Lt. Sta. 390+10 Elev. 408.26

B.M. No. 32A Spike in side of 36" Sycamore
64' Rt. Sta. 406+95 Elev. 376.42

B.M. No. 33A Spike in side of twin Sycamores
35' Lt. Sta. 413+64 Elev. 372.22

B.M. No. 34A Spike in side of 6" Triple Wild Cherry
101' Lt. Sta. 416+76 Elev. 383.97

B.M. No. 35A Spike in side of leaning 14" Sycamore
93' Lt. Sta. 418+59 Elev. 373.91



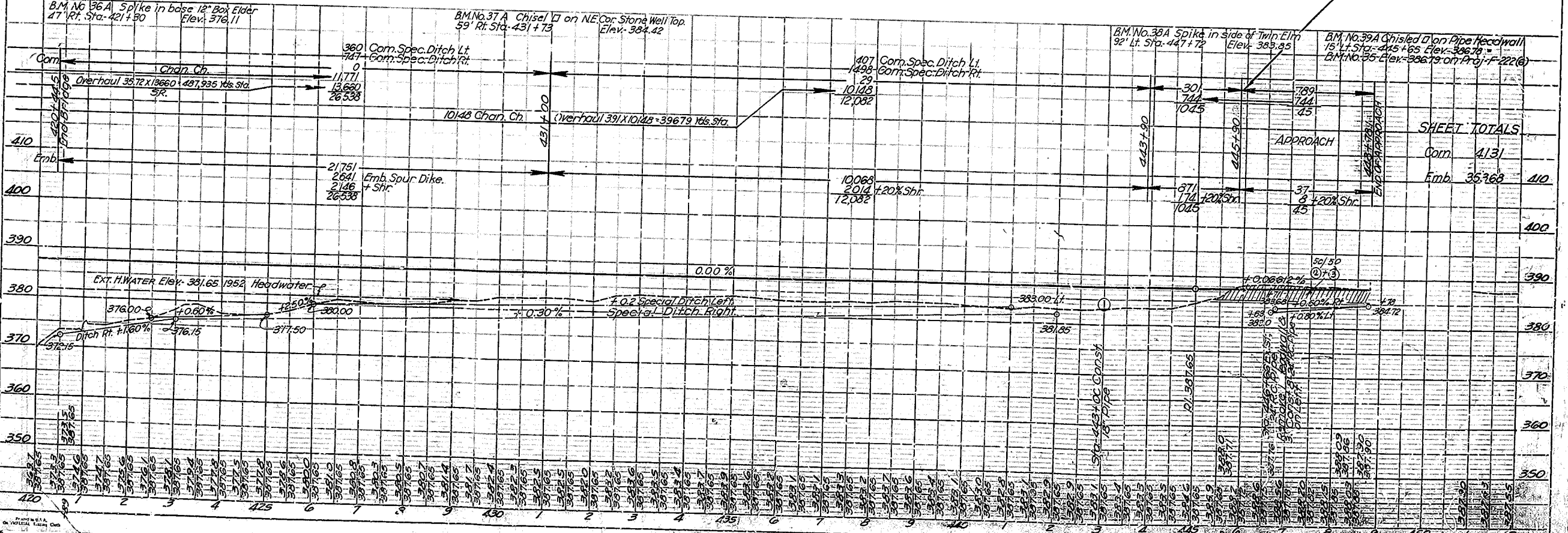
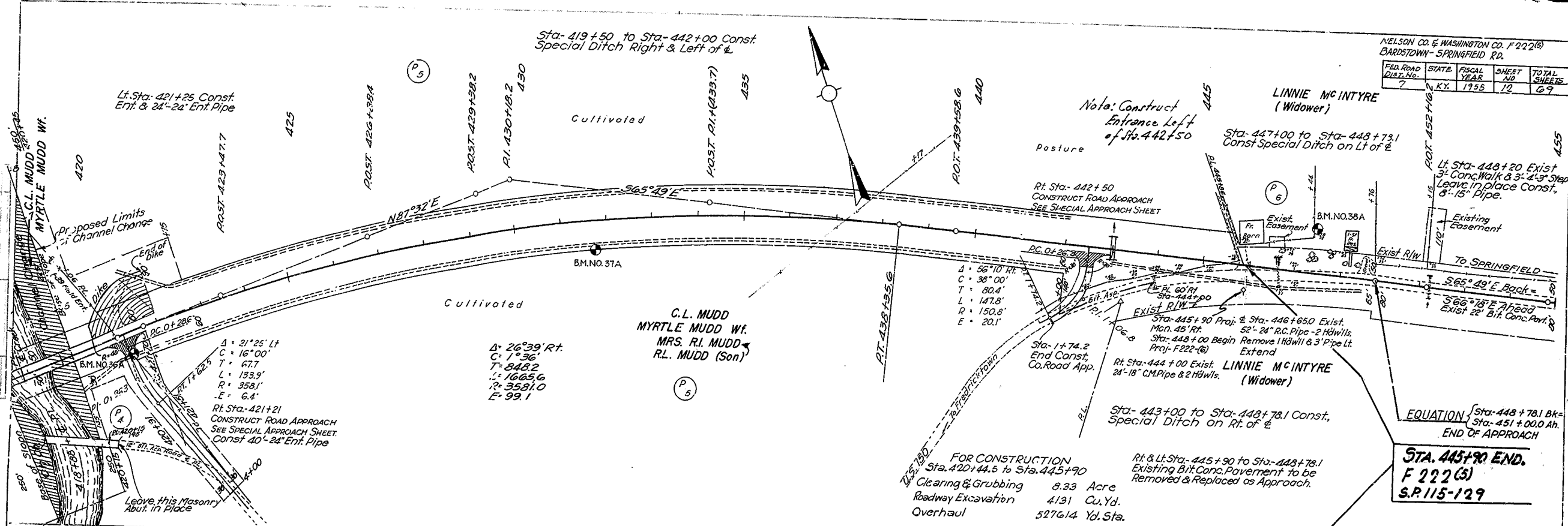
NELSON COUNTY SHEET TOTALS
Com. 18260
Emb. 25176

WASHINGTON COUNTY SHEET TOTALS
Com. 15204
Emb. 2926

NELSON CO. & WASHINGTON CO. F 222(S) CARDSTOWN - SPRINGFIELD RD.				
FED. ROAD DIST. NO.	STATE	FISCAL YEAR	SHEET NO.	TOTAL SHEETS
7	KY.	1955	12	67

PLAN	DATE
DATE	
BY	
CHECKED	
APPROVED	
DESIGNED	
CONTRACT NO.	
PROJECT NO.	
SECTION NO.	
DATE	

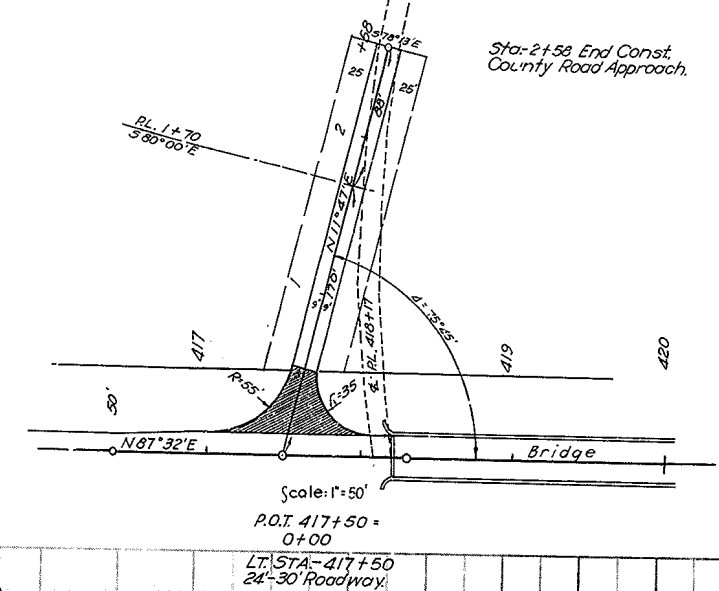
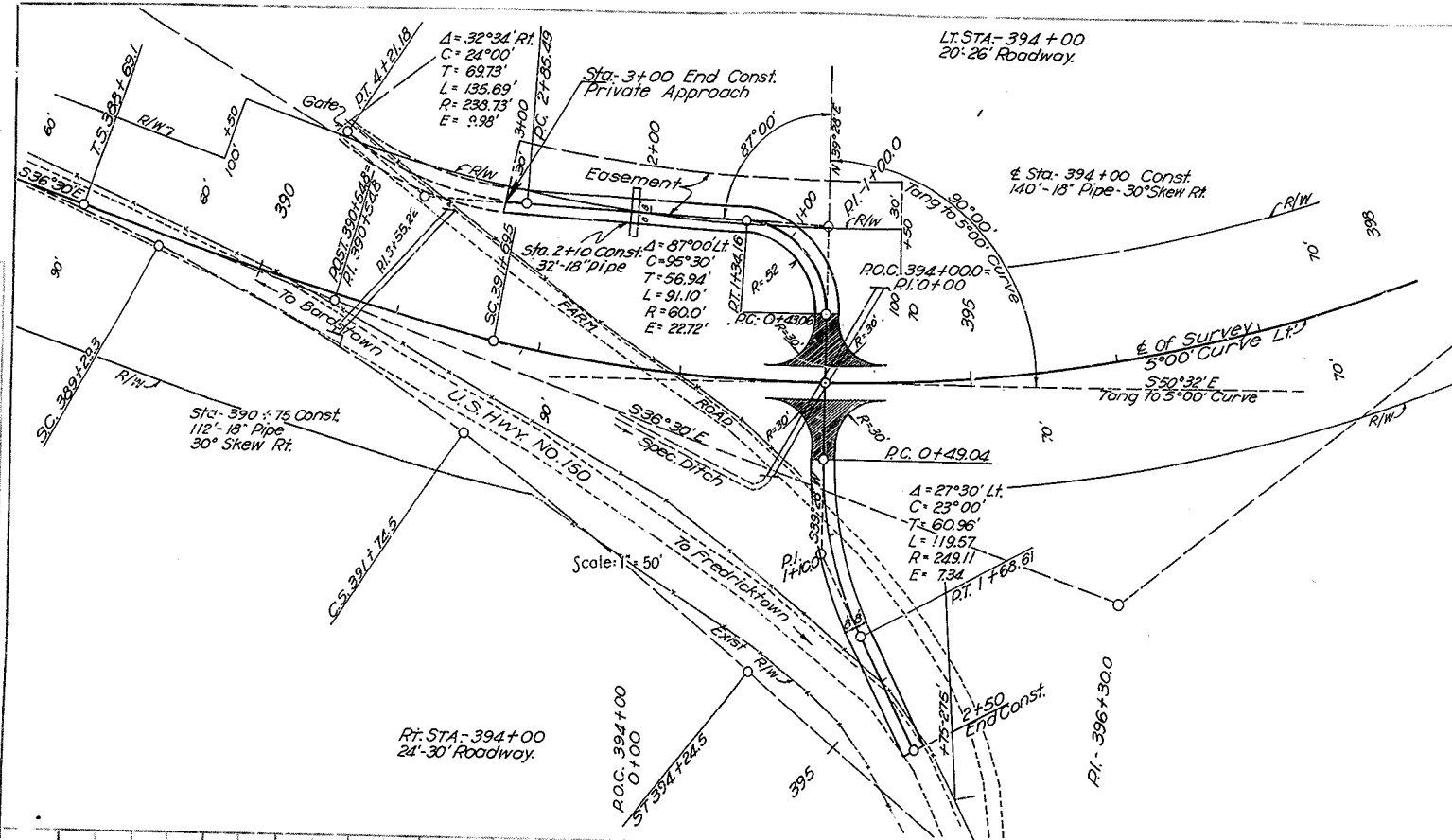
PROFILE	DATE
DATE	
BY	
CHECKED	
APPROVED	
DESIGNED	
CONTRACT NO.	
PROJECT NO.	
SECTION NO.	
DATE	



NELSON CO. & WASHINGTON CO. F 227(6)
 BARDSTOWN - SPRINGFIELD RD.

FED. ROAD DIST. NO.	STATE	LOCAL YEAR	SHEET NO.	TOTAL SHEETS
7	KY.	1955	13	67

DATE: _____
 PLAN: _____
 SITE WORK: _____
 SURVEYED: _____
 ALIGNED: _____
 CHECKED: _____
 BY: _____



DATE: _____
 PROFILE: _____
 SURVEYED: _____
 CHECKED: _____
 BY: _____

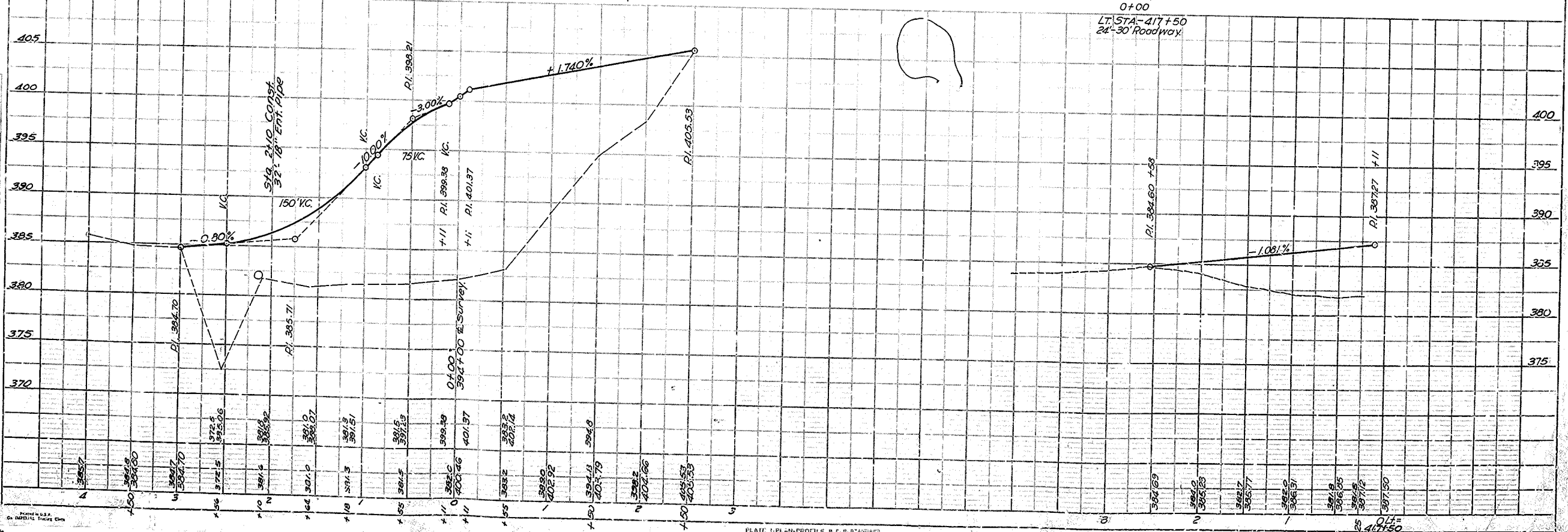
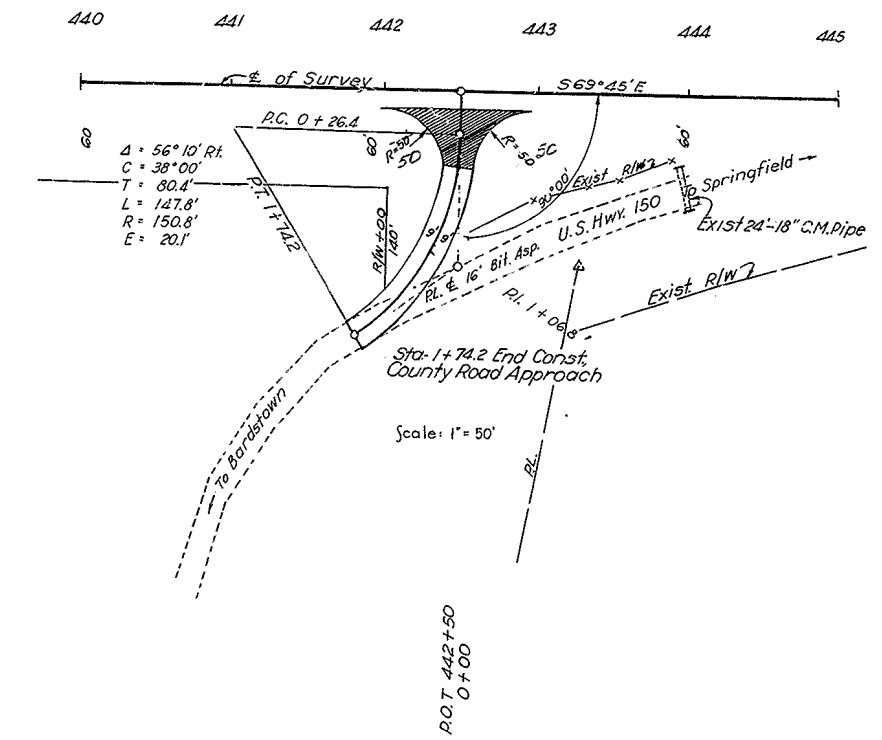
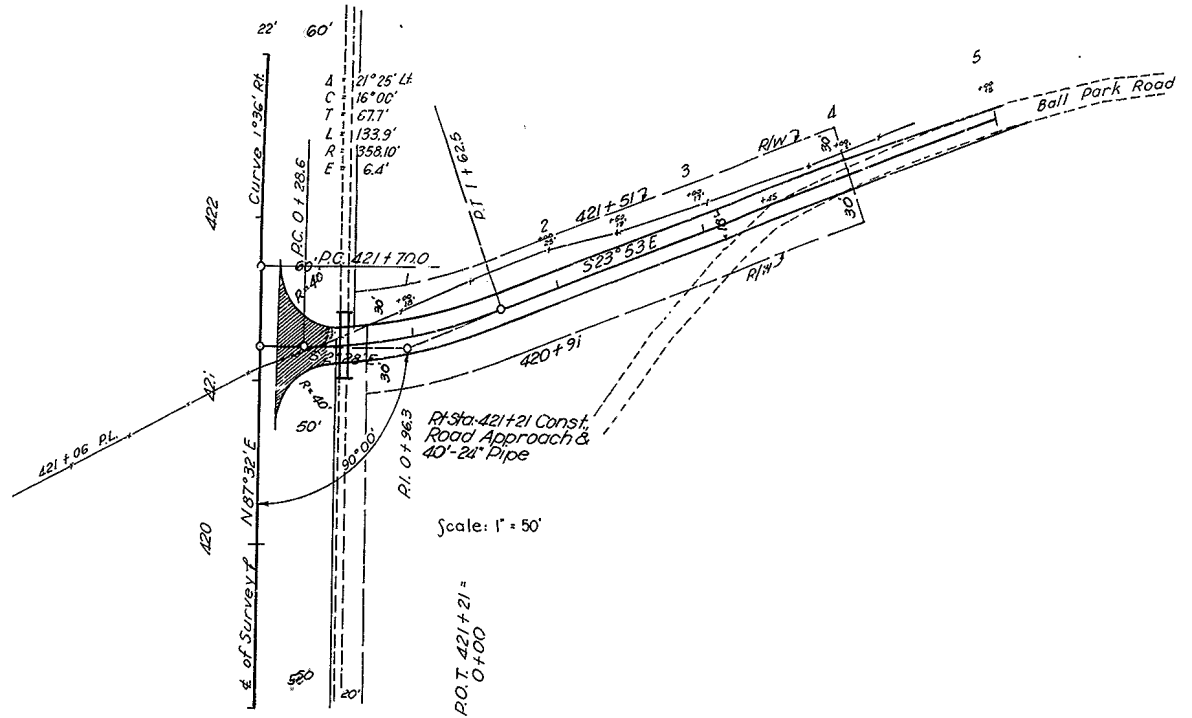


PLATE 1 - PLAN-PROFILE M. P. R. STANDARD
 1954 EDITION, 2nd Ed., Geop. Rev. 7th

NELSON CO. & WASHINGTON CO. F 222(3)
 BARDSTOWN - SPRINGFIELD RD.

FED. ROAD DIST. NO.	STATE	FISCAL YEAR	SHEET NO.	TOTAL SHEETS
7	KY.	1955	14	69

PLAN
 DATE
 BY
 CHECKED
 APPROVED



PROFILE
 DATE
 BY
 CHECKED
 APPROVED

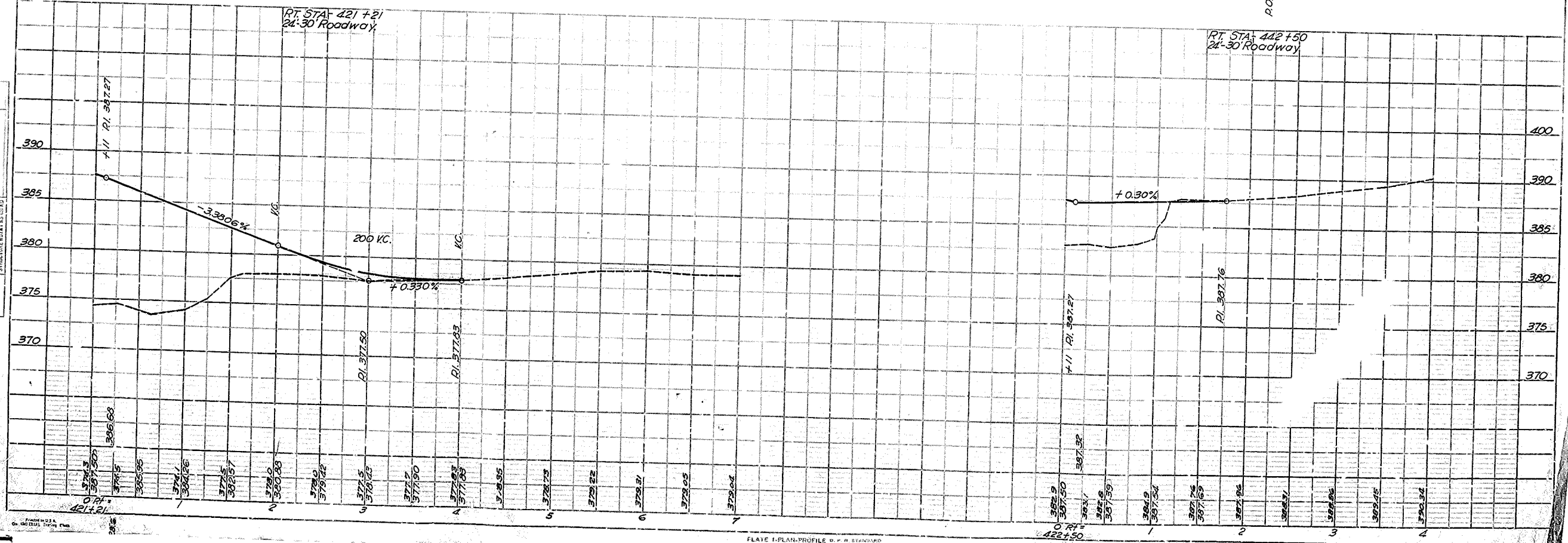


PLATE I-PLAN-PROFILE D. F. A. STANBARD

SP 90 - 125 - 3

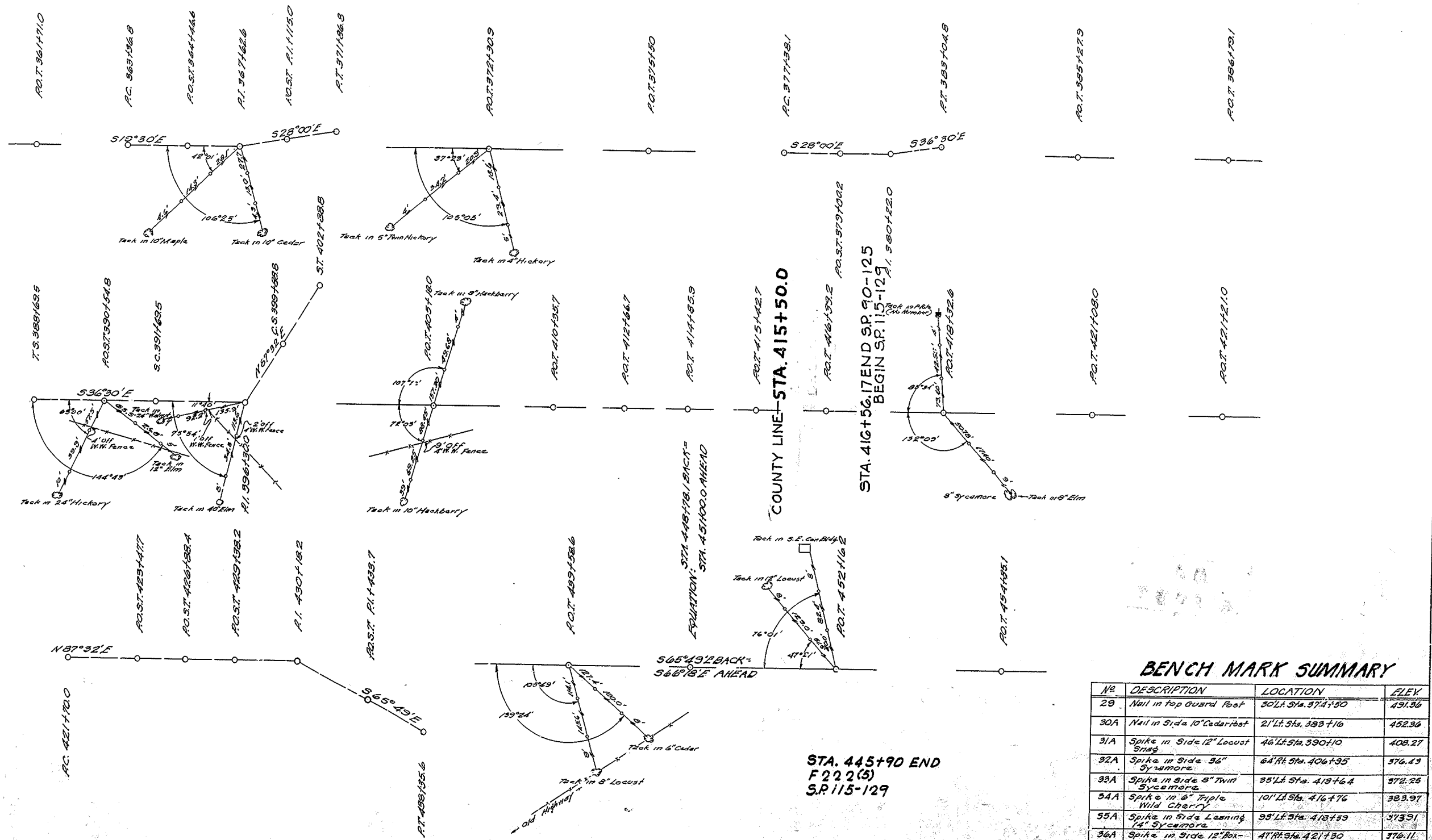
STA. 365+50 BEGIN
F 222 (S)
S.P. 90-125

REFERENCE

SHEET 1 OF 1

NELSON CO. & WASHINGTON CO. F 222 (S)
BARDSTOWN - SPRINGFIELD RD.

PRO. ROAD DIST. NO.	STATE	FISCAL YEAR	SHEET NO.	TOTAL SHEETS
7	MO.	1955	15	69



BENCH MARK SUMMARY

NO.	DESCRIPTION	LOCATION	ELEV.
29	Nail in top Guard Post	30' Lt. Sta. 374+50	491.56
30A	Nail in Side 10' Cedar Post	21' Lt. Sta. 383+16	452.36
31A	Spike in Side 12' Locust 5' High	46' Lt. Sta. 390+10	408.27
32A	Spike in Side 36" Sycamore	64' Rt. Sta. 406+95	376.49
33A	Spike in Side 8" Twin Sycamore	85' Lt. Sta. 419+64	372.25
34A	Spike in 6" Triple Wild Cherry	101' Lt. Sta. 416+76	383.97
35A	Spike in Side Leaning 14" Sycamore	98' Lt. Sta. 418+59	373.91
36A	Spike in Side 12" Box-Elder	47' Rt. Sta. 421+50	376.11
37A	Chisel on Corner of Stone Wall Top	58' Rt. Sta. 431+73	384.42
38A	Spike in Side 10" Twin Elm	92' Lt. Sta. 447+72	383.83
39 A	Chisel on Pipe Hd. BM No 9 Orig Line and	15' Lt. Sta. 445+65	386.78
		BM No 95 Proj. F 222 (S)	386.79